

Mineral Fiber Acoustic Ceiling Panels



HIGH DENSITY PRODUCTS

CMAx® High density MFC products, as our traditional classic and competitive items, exhibit properties of good humidity resistance, light reflectance and durability. They are cost effective and are mainly used at acoustics and decorating.

With fully developed textures and attractive price, these products are being more and more recognized by the markets over the world.

Technical Data

PROPERTIES	TEXTURE	A001/A002/A003/A004/P001/P002 /F001/F002/F003/F004/F005/F006/F007
MATERIAL		Mineral Wool
Density		370-450KGS/M ³
Surface Finish		Acrylic-Coating
NRC		≥0.45
Fire Resist/Flamespread		Class A (GB8625-88 stipulation)
Light Reflect		0.60-0.80
Sagging Resistance Properties		Warranty against visible sag
Humidity Resistance		≥70% relative humidity



Loading Capacity

SIZE	THICKNESS (mm)	QUANTITY (M ² /40HQ)	THICKNESS (mm)	QUANTITY (M ² /40HQ)
2'x2';595x595mm	7	8411	8	7516
2'x2';595x595mm	9	6804	10	6300
2'x2';2'x4';595x595mm;595x1195mm	12	5400	14	4500
2'x2';2'x4';595x595mm;595x1195mm	15	4320		

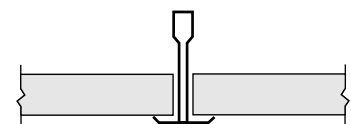
Loading Port: Tianjin China

Key Attributes

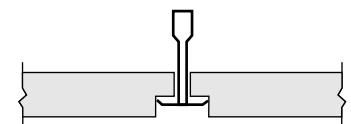
- High humidity resistance properties
- Excellent light reflectance and durability
- Zero Release of CH₂O
- No content of asbestos
- Economical

Typical Applications:

- Lobbies
- Office and conference rooms
- Corridors
- Department stores
- Auditoriums



Square

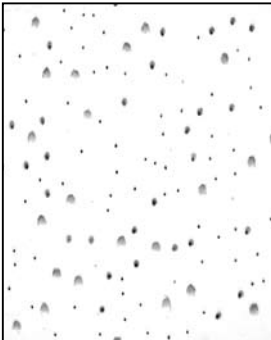


Regular

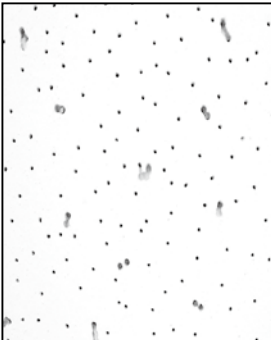


HIGH DENSITY PRODUCTS

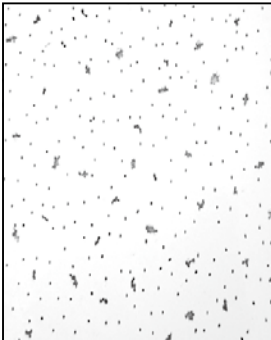
Main Textures



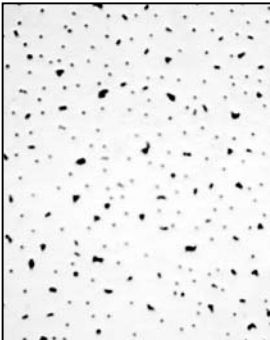
TEXTURE—A001



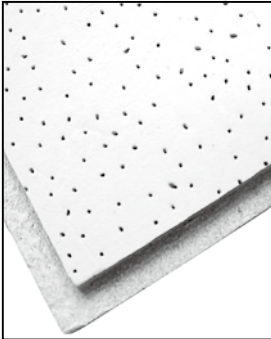
TEXTURE—A002



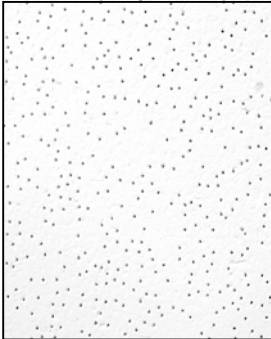
TEXTURE—A003



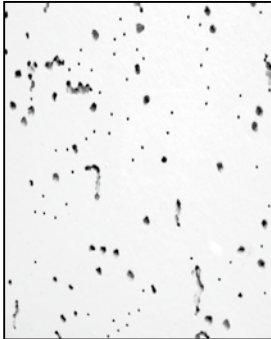
TEXTURE—A004



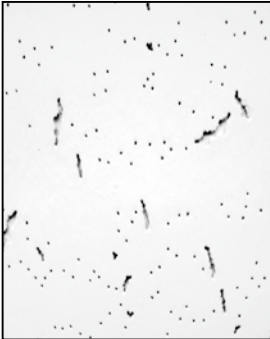
TEXTURE—P001
(Non-directional perforated)



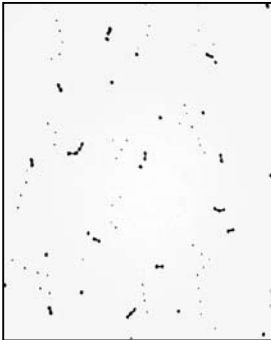
TEXTURE—P002
(Directional perforated)



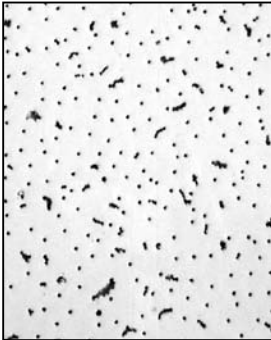
TEXTURE—F001



TEXTURE—F002



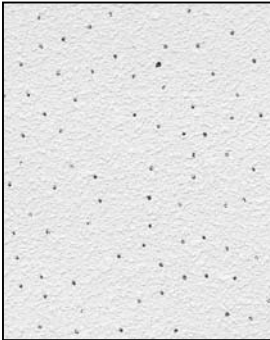
TEXTURE—F003



TEXTURE—F004



TEXTURE—S001



TEXTURE—S002

LOW DENSITY PRODUCTS

CMAx® low density MFC products are our newly developed types, with outstanding advantages, such as fire-proofing, sound absorption, heat insulation, sag resistance, easy fixing and replacement, various beautiful textures, pollution free, etc. All these features make it possible to decorate a refined surrounding of hotel lobbies, entrance halls, apartments, auditoriums and so on.

Technical Data

PROPERTIES	TEXTURE	MA01/MA02/MA03/MA04/MP01/MP02/MP03 /MF01/MF02/MS01/MS02
MATERIAL		Mineral Wool
Density		240-280KGS/M ³
Surface Finish		Acrylic-Coating
NRC		≥0.50
Fire Resist/Flamespread		Class A (GB8625-88 stipulation)
Light Reflect		0.70-0.80
Sagging Resistance Properties		Warranty against visible sag
Humidity Resistance		≥80% relative humidity



Loading Capacity

SIZE	THICKNESS (mm)	QUANTITY (M ² /40HQ)	THICKNESS (mm)	QUANTITY (M ² /40HQ)
2'x2';2'x4';595x595mm;595x1195mm	12	5400	15	4320
2'x2';2'x4';595x595mm;595x1195mm	13	4968	18	3301
2'x2';2'x4';595x595mm;595x1195mm	14	4500		

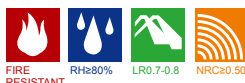
Loading Port: Tianjin China

Key Attributes

- High humidity resistance properties
- Excellent light reflectance and durability
- Zero Release of CH₂O
- No content of asbestos
- Economical

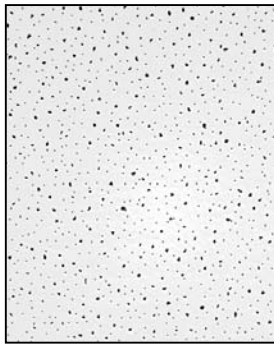
Typical Applications:

- Lobbies
- Office and conference rooms
- Corridors
- Department stores
- Auditoriums

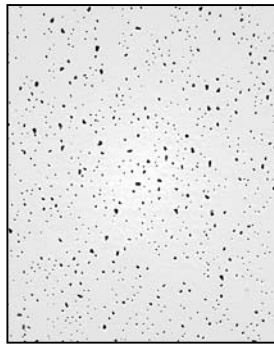


LOW DENSITY PRODUCTS

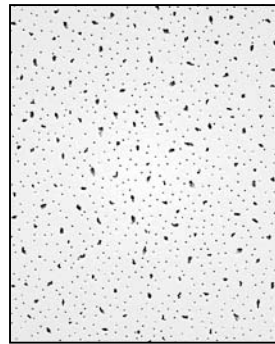
Main Textures



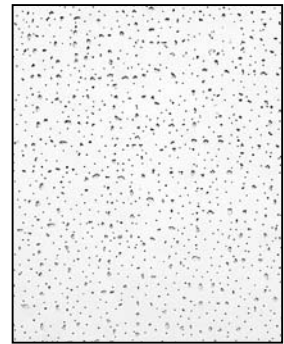
TEXTURE—MA01



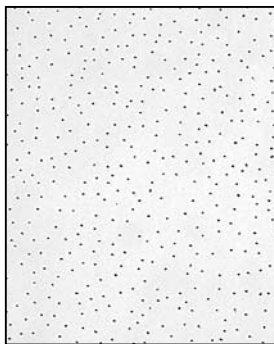
TEXTURE—MA02



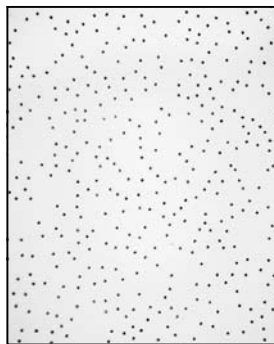
TEXTURE—MA03



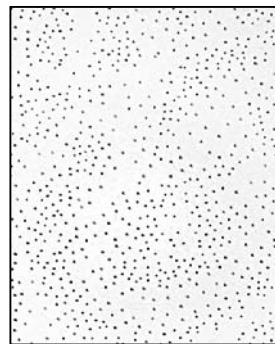
TEXTURE—MA04



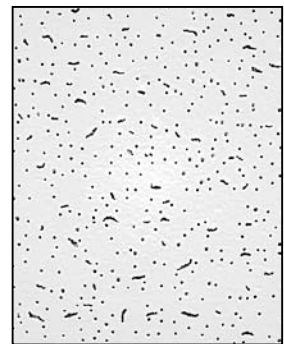
TEXTURE—MP01



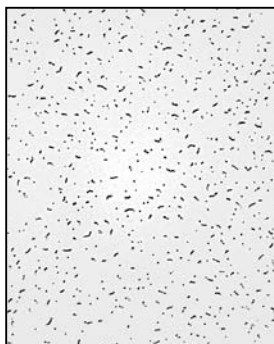
TEXTURE—MP02



TEXTURE—MP03



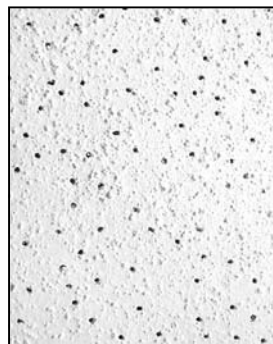
TEXTURE—MF01



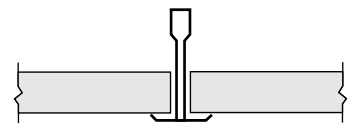
TEXTURE—MF02



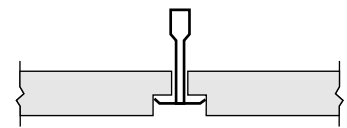
TEXTURE—MS01



TEXTURE—MS02



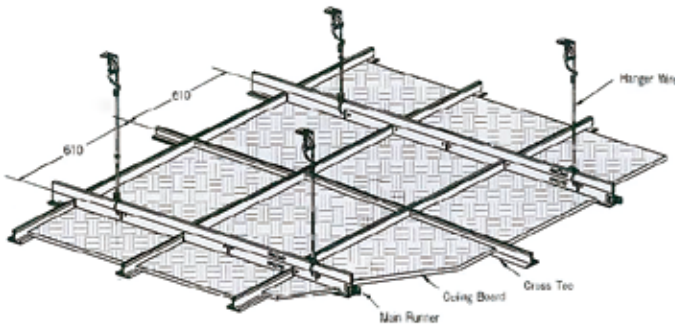
Square



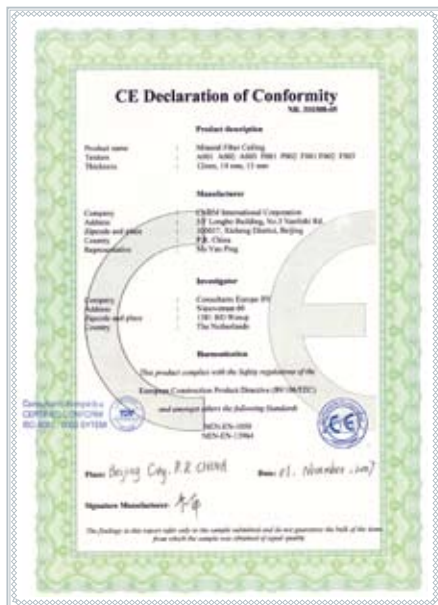
Tegular

• Instructions for Installation

- When fixing the mineral fiber ceiling panels, please follow the design construction of the products. Please be assured that the firmness and the planes of joint.
- The environment of installing or using should provide a relative humidity of not more than 70%(High Density) or 80%(Low Density).
- You should firstly complete all the wet projects inside, and then start to set up the mineral fiber ceiling.
- Generally speaking, if you need load-bearing tiles, use strengthened T-grid please, further more, you'd better separately design and fix the big lamps or other heavy objects.
- Put on clean gloves when working, so as to keep the panels clean and tidy.
- After finishing installation, pay attention to ventilate the room and close the doors or windows when raining.



• Certificate



CE CERTIFICATE



SONCAP CERTIFICATE

CMA[®]MAX Acoustic Ceiling Panels

Combine All the Best Features Into One product

Established in 1984, China National Building Materials (Group) Corporation (CNBM) is the largest group corporation of building materials with total assets of 13 billion Yuan (RMB) and total staff of 30,000. CNBM now owns 200 subordinating firms of solely owned and joint ventures.

CNBM International Corporation is one of the subsidiaries of CNBM. We are exporter and manufacturer specialized in Ceiling Systems. The products include:

- ▶ **Mineral Fiber Ceiling**
- ▶ Fiberglass Ceiling
- ▶ Rock Wool Ceiling
- ▶ Vinyl Laminated Gypsum Ceiling
- ▶ Gypsum Board
- ▶ Metal Ceiling
- ▶ Ceiling Grid and Accessories



Our company concentrates on quality management, technique improvement and innovation, by taking quality as the first and foremost factor in our organization development. We welcome people from various circles of life to explore new prospects with us on the basis of mutual benefits, mutual trust and mutual development.



- Fiberglass Ceiling & Wall Panel
- **Mineral Fiber Ceiling**
- Suspension Ceiling T-Grid
- Gypsum Ceiling & Gypsum Board
- Calcium Silicate Board
- Aluminum Ceiling
- PVC Wall Panel and Ceiling
- Aluminum Composite Panels

